
TAYLOR STILES

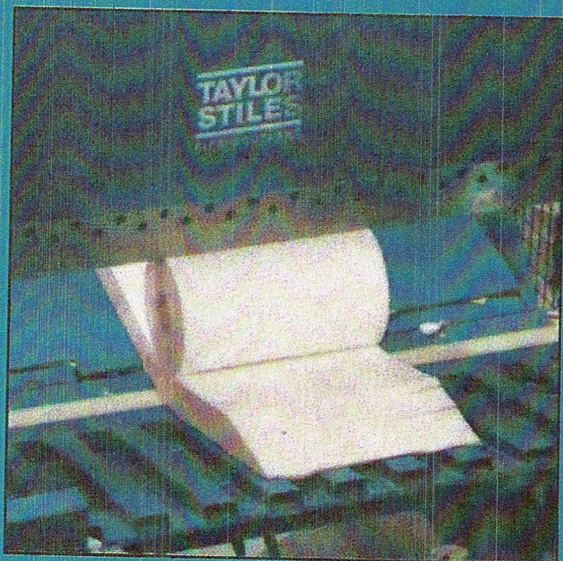
(Process Equipment)
Part of the FCE Group

REEL SPLITTERS

Unit 1-2 Block 7,
Banbeath Industrial Estate,
Leven, Fife, Scotland KY8 5HD
Tel: 01333 427220/429434
Fax: 01333 422952
www.fcegroup.com

REEL SPLITTERS

Taylor Stiles Reel Splitters have been developed from the companies long involvement in "Size Reduction" applications in many industries, machines can be shipped, installed and commissioned in clients mills throughout the world.

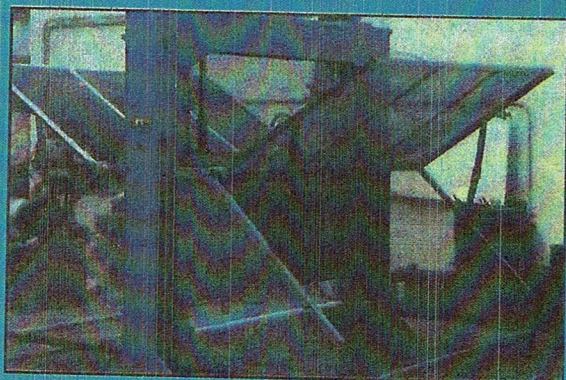


CONSTRUCTION

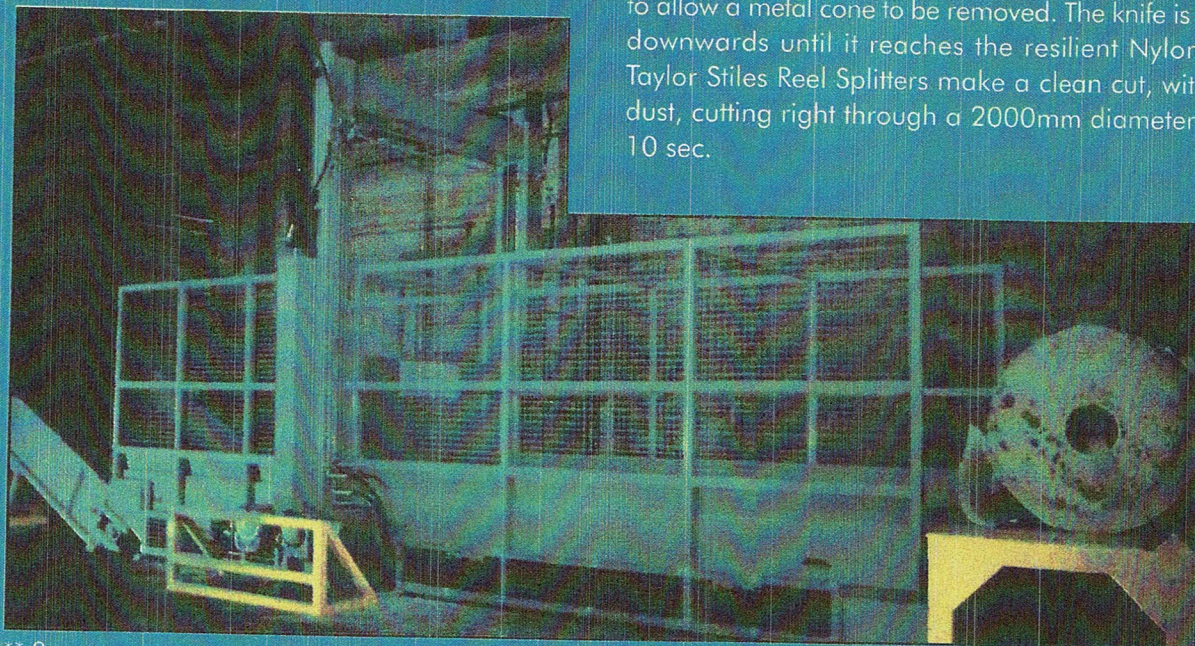
- Taylor Stiles Reel Splitters, large or small, all feature the same rugged construction at competitive prices, designed to produce maximum efficiency with minimum effort, to give you a complete cut through.
- The heavy guillotine blade is powered down to a bedknife that rests on two compression pads, ensuring a clean cut and preservation of blade.
- Our Reel Splitters are engineered to the highest standards to absorb, without damage, the knocks inherent in a busy paper machine house.
- Designed for minimum maintenance, knives can be replaced in less than one-hour with normal hand tools. The average life - between sharpenings is usually one month, depending on usage.
- The smooth operation of the Reel Splitter is carried out from a standard heavy duty hydraulic power pack through high quality machine mounted cylinders.

CAPACITY

Standard sizes of Reel Splitters can take reels up to 2000mm diameter and 3500mm long, or longer, to special order. They can handle any type of paper or board even cutting tissue paper, with, if required, a precise stop halfway through to allow a metal cone to be removed. The knife is then pushed downwards until it reaches the resilient Nylon knife-bed. Taylor Stiles Reel Splitters make a clean cut, without fluff or dust, cutting right through a 2000mm diameter reel in only 10 sec.



** 7



** 2

FEED / DISCHARGE

A wide variety of Feed and Discharge devices, all safely interlocked, can be provided to suit geographical layout and preferred handling method of each mill. The range includes:

- 1 Simple manual feed and roller discharge method.
- 2 Conveyor feed and discharge system which also doubles up to a method of further dicing the raw material for pulping.
- 3 Bucket feed and conveyor discharge.

INCREASED PRODUCTIVITY

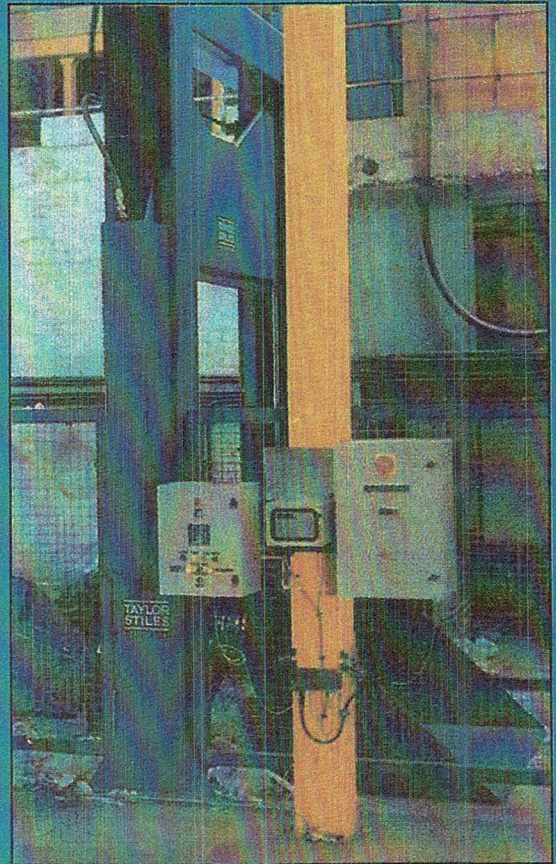
Time in handling is greatly reduced, thus providing enormous cost savings and realisation of capital outlay within a very short period of time.

SAFETY FEATURES

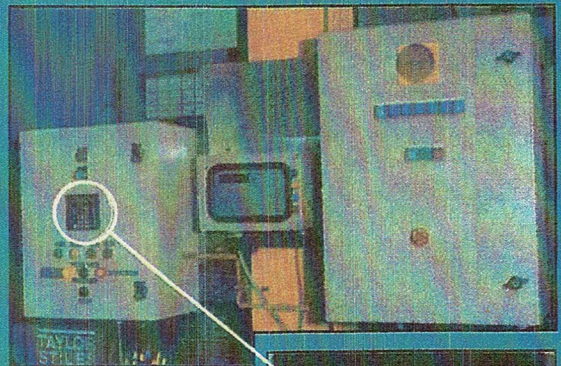
We at Taylor-Stiles pay particular attention to safety, with "hold-in" manual controls and interlocked safety gates.

AUTOMATIC WEIGHING

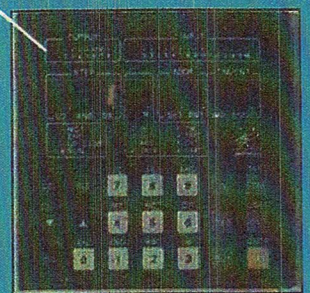
Many of our most recent installations involve the output of the reel splitter being conveyed, via inclined or flat conveyors, also of our supply, directly into a pulper where the application of load cell technology and either analogue or digital instrumentation, allows the mill to achieve its desired quality and furnish.



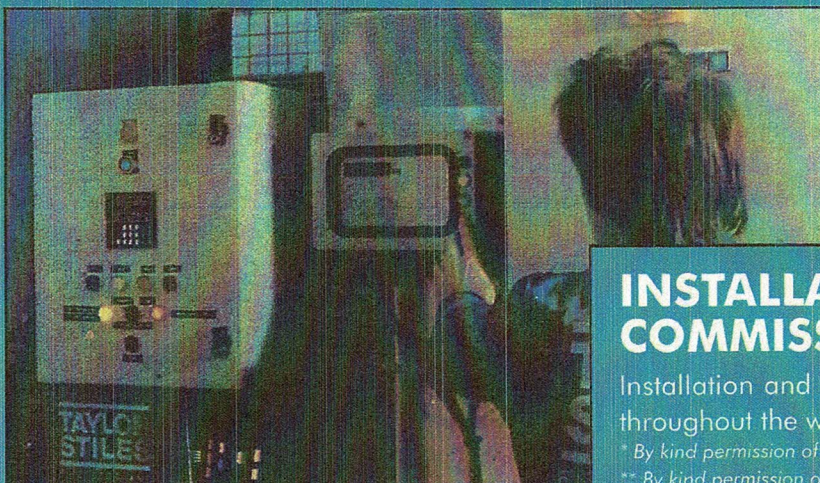
* 3



*



*



INSTALLATION AND COMMISSIONING

Installation and Commissioning is offered on all products throughout the world.

* By kind permission of Georgia Pacific Corporation

** By kind permission of Omnipac (U.K.) - A division of Hartman Fibres